

MANUAL OF LABOUR WELFARE ORGANISATION, AJMER REGION

4(1)(b)(i) ORGANISATION, ITS FUNCTIONS AND DUTIES

The Labour Welfare Organization, Nagpur Region under the Ministry of Labour & Employment, Government of India deals with the administration of Welfare Funds for certain specified categories of workers in the States of Maharashtra, Goa and the Union Territories of Daman, Diu, Dadra, Nagar & Haveli. Separate legislations have been enacted by the Parliament to set up Welfare Funds to provide medical care, social security, housing, education and recreation facilities to the workers engaged in the Beedi Industry, Iron Ore, Manganese Ore, Chrome Ore Mines, Limestone & Dolomite Establishments and Cine Industries. The Welfare Funds administered by this region are as under: -

- (1) The Beedi Workers Welfare Fund Act, 1976;
- (2) The Limestone & Dolomite Mines Labour Welfare Fund Act, 1972;
- (3) The Cine Workers Welfare Fund Act, 1981;
- (4) The Iron Ore, Manganese Ore, Chrome Ore Mines Labour Welfare Fund Act, 1976

These funds have been created for levy of Cess either on production, consumption of minerals, or on manufacture of Beedis or on production of feature films for financing the Welfare Schemes.

The Labour Welfare Organization which administers these Funds is headed by a Director General (Labour Welfare) /Joint Secretary. He is assisted by the Welfare Commissioner (Hqrs.) who supervises the nine Regional Welfare Commissioners for purpose of Administration of these Funds.

This region was created w.e.f. 23.11.1983 by way of bifurcation from Jabalpur Region with territorial jurisdiction over the States of Maharashtra and Goa and the Union Territories of Daman, Diu, Dadra, Nagar & Haveli. The Welfare & Cess Commissioner heads the region with his headquarters at Nagpur for levy of Cess and administration of various Welfare Schemes. Two administrative field offices viz. the Office of the Assistant Welfare Commissioner and Office of the Assistant Engineer are located at Panaji-Goa and Solapur respectively. The addresses of the Welfare Commissioner/ Assistant Welfare Commissioner & the Assistant Engineer offices are given below :

1. Office of the Welfare & Cess Commissioner,
Govt. of India, Ministry of Labour & Employment,
Labour Welfare Organisation,
CGO Complex, Block 'C', 2nd Floor, Seminary Hills
NAGPUR – 440 006 (MS)
2. Office of the Assistant Welfare Commissioner,
Government of India, Ministry of Labour & Employment,
Rua St. Tome, Saldanha Building
PANAJI – GOA – 403 001
3. Office of the Assistant Engineer,
Govt. of India, Ministry of Labour & Employment
C/o. Padmashaali Purohit Sangh Building
1881, New Pacha Peth, Dutt Nagar
SOLAPUR – 413 005

Implementation of welfare schemes in the sphere of health and medical care, education, housing, family welfare, social security, water supply and recreation, formulated under Limestone & Dolomite Mines Labour Welfare Fund Act, 1972, Beedi Workers Welfare Fund Act, 1976, Cine Workers Welfare Fund Act, 1981, and the Iron Ore, Manganese Ore, Chrome Ore Mines Labour Welfare Fund Act, 1976 and assessment/collection of Cess on Limestone & Dolomite under Limestone & Dolomite Mines Labour Welfare Fund Act, 1972 and Iron Ore, Manganese Ore, Chrome Ore Mines Labour Welfare Fund Act, 1976.

There are 19 SCM/Static/Allopathic/Ayurvedic dispensaries are located at different places in the State of Maharashtra.

WELFARE COMMISSIONER

- 1.Functions as Head of the Department and is responsible for overall administrative and financial control of the Labour Welfare Organization, Ajmer Region.
- 2.He is responsible for proper implementation of various Welfare Schemes for Mine/Beedi/Cine workers and their dependents in the States of Rajasthan, Gujarat and Haryana.
- 3.He is also performing the statutory functions as laid down under various Welfare Fund Legislations.
- 4.All matters pertaining to collection of cess under the relevant acts and rules framed there under.

DY. WELFARE COMMISSIONER

- 1.Implementation and supervision of Welfare Schemes and ensuring their proper functioning.
- 2.All matters pertaining to collection of cess under the relevant acts and rules framed there under.
- 3.Financial and administrative functions to the extent such powers have been delegated.
- 4.Inspection of the Welfare Institutions/Dispensaries/Mine Establishments/Metallurgical factories/Hospital.
- 5.Any other duties assigned by the superior officers.

ASSTT. WELFARE COMMISSIONER

- 1.Implementation and supervision of Welfare Schemes and ensuring their proper functioning.
- 2.Secretary of the Advisory Committee/Finance Sub-Committee.
- 3.Function as Head of Office and is responsible for administrative and financial functions to the extent such powers have been delegated.
- 4.Procurement, supply and maintenance of general stores/stationery/medicines/medical equipments etc. as required for day to day functioning of the various welfare institutions.
- 5.Responsible under the general financial rules as amended from time to time and any other special or general orders.
- 6.Supervision of and carrying out the work of the organization in the absence of the Welfare Commissioner on tour etc. to the extent as delegated by him.
- 7.Inspection of the Welfare Institutions/Dispensaries/Mine Establishments/Metallurgical factories/Hospital.
- 8.Any other duties assigned by the superior officers.

WELFARE ADMINISTRATOR

- 1.Implementation and supervision of Welfare Schemes and ensuring their proper functioning.
- 2.All matters pertaining to assessment & collection of cess under the relevant acts and rules framed there under.
- 3.Survey of labour under his/her beat to ensure their needs as well as assist them in deriving benefits from various welfare schemes-proper scrutiny and verification of application received from beneficiaries with a view to ascertaining the deficiency/lapses/genuineness.
- 4.Monitoring the work of the staffs dealing with welfare scheme and provide necessary guidance for their proper functioning.
- 5.Ensuring supervision of periodical Returns/Reports and such other information as asked for in respect of welfare units/institution.
- 6.Educate the labourer to give up social evil like drinking, adopt small family norms, cleanliness etc.
- 7.Inspection of the Welfare Institutions/Dispensaries/Mine Establishments/Metallurgical factories/Hospital.
- 8.Any other duties assigned by the superior officers.

ADMIN-CUM-ACCOUNTS OFFICER

- 1.Maintenance of the Accounts of the Organization.
- 2.Preparation of the Budget.
- 3.Cheque Drawing Officer.
- 4.Drawing and Disbursing Officer.
- 5.Reconciliation of expenditure etc.
- 6.Settlement of Audit Paras and objections.
- 7.Advice on matters relating to Finance/Accounts.
- 8.Maintenance of GPF Accounts pertaining to Gr. 'D' Employees.
- 9.Joint Custody of Cash along with the Cashier.
- 10Any other duties assigned by the superior officers.

ASSTT. WELFARE ADMINISTRATOR

- 1.Implementation and supervision of Welfare Schemes and ensuring their proper functioning.
- 2.All matters pertaining to assessment & collection of cess under the relevant acts and rules framed there under.
- 3.Survey of labour under his/her beat to ensure their needs as well as assist them in deriving benefits from various welfare schemes-proper scrutiny and verification of application received from beneficiaries with a view to ascertaining the deficiency/lapses/genuineness.
- 4.Ensuring supervision of periodical Returns/Reports and such other information as asked for in respect of welfare units/institution.
- 5.Supervision of and carrying out the work of the organization in the absence of the Welfare Commissioner on tour etc. to the extent as delegated by him.
- 6.Inspection of the Welfare Institutions/Dispensaries/Mine Establishments/Metallurgical factories/Hospital.
- 7.Any other duties assigned by the superior officers.

HEAD-CLERK-CUM-ACCOUNTANT

- 1.Responsible for the work of the section in which posted.
- 2.Responsible for the correct and upto date maintenance of accounts both receipt and expenditure including their registers etc.
- 3.Control over expenditure against sanctioned grant-reconciliation of accounts.
- 4.Checking of Cash Book.
- 5.Proper checking of Bills/Cheques to be cashed etc.
- 6.Settlement of audit paras/objections.
- 7.Expeditious disposal of the work of the section-checking and submission of periodical returns/reports timely.
- 8.Recording and weeding of the files timely.
- 9.Any other duties assigned by the superior officers.

SENIOR CLERK

- 1.Scrutiny of complicated cases, noting thereon to facilitate the officer to take a decision and drafting.
- 2.Guidance to the Junior Clerk in the discharge of their work.
- 3.Up to date maintenance of various rules/orders/instructions/guard files.
- 4.Proper maintenance of the files under his charge including records.
- 5.Any other duties assigned by the superiors.

JUNIOR CLERK

- 1.Maintenance of files in the prescribed manner File Register-typing work-Despatch & Diary Work- Office records-placing of PUC's, docketing them etc.
- 2.Noting and Drafting of the files of simple nature.
- 3.Recording and weeding of old files.

4.Any other duties assigned by the superiors.

MEDICAL OFFICERS

- 1.Planning, medical supervision and co-ordination.
- 2.Medical consultation/ward work/outdoor patients/Department work/dispensary work/including proper functioning of the dispensary/Indoor/Outdoor wards.
- 3.Controlling/Maintenance and repair of the medical vans, if any.
- 4.Custody of medicines/medical equipments/general stores/maintenance of its account.
- 5.Financial and administrative functions so far as such powers have been delegated.
- 6.Any other duties assigned by the superior officers.

PHARMACIST

- 1.Compounding and dispensing prescriptions according to the hospital/formulary of prescriptions of doctors.
- 2.Being responsible for initiating the indents, stores and maintenance of stock and accounts of medical supplies and appliances under his charge.
- 3.Providing first aid treatment of the injured and repeat prescription of the physicians when ordered in the absence of the doctors.
- 4.Compiling statics of hospital/dispensary in accordance with instruction, submission of periodical report/returns.
- 5.Attending to work of the clinical side and doing the routine test of urine, stool and blood provided he has undergone adequate training.
- 6.Any other duties assigned by the superior officers.

STAFF NURSES:

- 1.General care of the patients.
- 2.Responsible for the complete nursing care of the patients assigned to her .
- 3.Admission & instructions to patients and their relations.
- 4.Bathing patients including daily care of mount, nails, pressure point.
- 5.Four hourly of more frequent to pressure points.
- 6.Giving and removing of bed pans and urine pots.
- 7.Giving and removing hot water bottles.
- 8.Bed making .
- 9.Feeding of patients.
- 10.Distribution of diets. Milks & Preparation of special foods, eggs, milks etc.
- 11.Technical nursing care patients .
- 12.Administration of medicine.
- 13.Administration of injections.
- 14.Assistance in administration of intra venous injections.
- 15.Preparation of injection and cleaning up.
- 16.Recording of medicines and injections given.
- 17.Taking and charting T.P.R.
- 18.Rounds with doctors.
- 19.Technical procedures e.g.enema, cauterization dressing, irrigations, oxygen therapy, preparing for and cleaning after procedures.
- 20.Preparation for and assistance in clinical tests and medical procedures.
- 21.Pre and post operative care.
- 22.Urine testing.
- 23.Collecting labelling and dispatching of specimens.
- 24.Escorting patients to and fro departments.
- 25.Giving and receiving reports.

B. Ward Management.

1. Handing over and taking charge of shift.
2. Keeping the ward clean and tidy.
3. Preparation of surgical supplies, bandage splints.
4. Routine care and cleaning of dressing trolleys, cupboards, apparatus, mackintosh etc.
5. Care of clean and soiled linen.
6. Disinfection of linen, beds, floor and bedpans.
7. Any other duty assigned by the superior officers.

VAIDYA

1. Planning, Medical supervision and co-ordination.
2. Medical consultation/treatment of patients at the dispensary as well as work sites where ordered.
3. Custody and maintenance of medicines/medical equipment/general stores and their accounts.
4. Supervision and controlling of the activities of the sub-centers, if any.
5. Survey work.
6. Any other duties assigned to him by the superior officers.

UP-VAIDYA

1. Compounding and dispensing prescriptions according to the formulary or prescription of the Vaidya.
2. Responsible for initiating the indents, stores and maintenance of stocks and account of medical supplies and appliances under his charge.
3. Providing first aid treatment to the injured and repeat prescriptions when ordered in the absence of the Vaidya.
4. Compiling statistics of the dispensary in accordance with the instruction and submission of reports and returns.
5. Any other duties assigned to him by the superior officers.

ASSISTANT ENGINEER

1. As laid down in the C.P.W.D. Manual.
2. Maintenance of Departmental residential and non residential buildings
3. Inspection of sites/houses under various housing schemes for beedi/mine workers.
4. Inspection of water supply schemes for mine workers.

SWEEPER

1. Will clear wards, floors, strikes, lavatories and toilet seats, windows, walls and other area in the ward/hospital/dispensary/welfare institutions/office and their ancillary rooms and keep the hospital/dispensary/welfare institutions/office grounds clean and free from stray dogs, cats, pigs etc.
2. Will clean urine/pots/beds pans and other soiled or contaminated appliances
3. Will provide bedpans and urine pots to the patients with promptness and prepare patients for operations and diagnostic tests.
4. Will assist in collection and handing urine and stool specimen.
5. Will transport dead bodies to the mortuary and dispose of specimen and organs removed during operations.
6. Will assist in disinfections of soiled lines, mattresses and terminal disinfections of the ward and conveyance of soiled linens to the laundry.
7. Will attend to such other duty allotted to him by the superior officers.

CHOWKIDAR

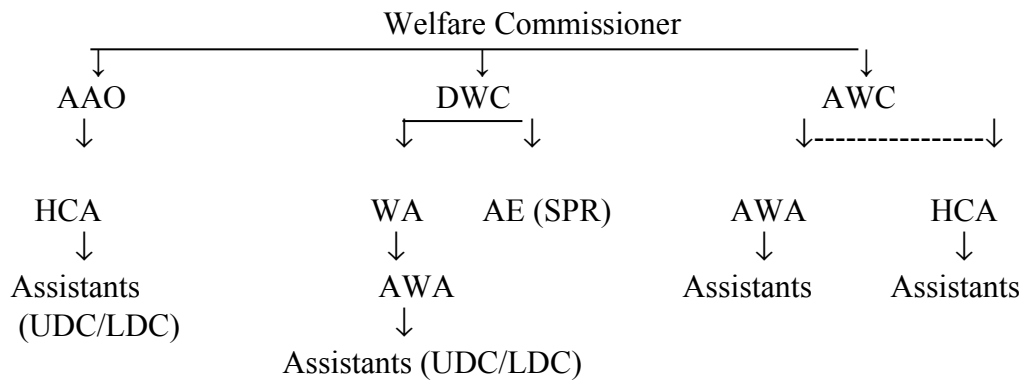
1. Will be on duty punctually at the approved area. He will be alert throughout the period of duty and perform the duties diligently and with vigilance.
2. Will be responsible for scrutiny of the building equipments and patients.
3. Will check that all doors and windows which have to be kept locked during the non-working hours of the hospital/dispensary/welfare institutions/office(s) are securely locked.
4. Will check daily and see that the fire fighting equipment is kept in good working conditions and take immediate steps in fire fighting in case there is an incident of fire.

PROCEDURE FOLLOWED IN THE DECISION MAKING PROCESS, INCLUDING CHANNELS OF SUPERVISION AND ACCOUNTABILITY.

Procedures prescribed by the headquarters (Labour Welfare Division, Ministry of Labour) in the welfare schemes are followed. Powers have been delegated at various levels as per functional needs.

Procedures prescribed by the headquarters (Labour Welfare Division, Ministry of Labour & Employment) in the welfare schemes are followed. Powers have been delegated at various levels as per functional needs.

Channel of supervision and accountability



4(1)(b)(iv) NORMS SET FOR DISCHARGE OF FUNCTIONS

UNDER HEALTH SCHEMES:

<u>Sl No.</u>	Name of Scheme	Time taken by Medical Officers/ Field Offices to forward the application	Time taken for settling of claims by Office of the Welfare Commissioner	
01	CANCER/HEART/KIDNEY/ MINOR DISEASES LIKE HERNIA, APPENDECTOMY, ULCER, GYNAECOLOGICAL AND PROSTRATE DISEASES	15 DAYS	1 Issuance of permission	1 week
			2 Issuance of Sanction order after receipt of complete claim forms	1-2 week
02	SPECTACLES / DOMICILLIARY TREATMENT OF TB / MONETARY COMPENSATION FOR STERILISATION	15 DAYS	Scrutiny of Application and issuance of sanction order	15-20 days
03	MATERNITY BENEFIT	15 DAYS	Scrutiny of Application and issuance of sanction order	30 days
04	GROUP INSURANCE SCHEME	10 DAYS	Scrutiny & forwarding of application to LIC	2-3 weeks

UNDER EDUCATION SCHEME.

Scholarship/Grant for purchase of books etc.

1. Scrutiny/verification of applications: within 30 days of closing date of receipt of applications.
2. Issuing of sanctions for eligible applicants : within 30 days of verification.
3. Actual disbursement of the scholarships/grants : As per annual programme to be drawn by welfare commissioner

1. Limestone & Dolomite Mines Labour Welfare Fund Rules 1973.
3. Iron Ore, Manganese Ore, Chrome Ore Mines Labour Welfare Fund Rules 1978.
4. Beedi Workers Welfare Fund Rules 1978
5. Cine Workers Welfare Fund Rules 1984._
(Sl.No.4&5 above are priced publications)

WELFARE SCHEMES:

HEALTH SCHEMES

1 Free Medical Treatment

Free Medical Care is extended to the Beedi/Mica/ Mine and Cine workers through the Static Dispensaries and Static-cum-Mobile Dispensaries run by the Labour Welfare Organization.

There are 14 Static cum mobile dispensaries, 2 Static dispensaries and 3 Ayurvedic dispensaries are functioning in the State of Maharashtra.

**2 Reimbursement of entire expenditure for treatment of cancer:
(Scheme was introduced on 01-12-1984)**

CANCER TREATMENT:
(for workers & dependents -
6 months continuous service is
essential)

- a) Reimbursement of full expenditure ** for the treatment taken in Govt. hospital /govt. recognised hospitals.
- b) Subsistence allowance shall be paid @ Rs.600-750 per month. Conveyance charges will be reimbursed from residence to hospital and back.

**3 Reimbursement of expenses for treatment of heart diseases:
(Scheme was introduced on 18-09-1984)**

HEART DISEASES:
(for workers & dependants -
. 3 years continuous service is essential)

- a) Reimbursement of expenditure upto Rs.1.3 lakhs **for the treatment taken in govt hospital / Govt.recognised hospital.
- b) Subsistence allowance shall be paid @ Rs.750-1000/- per month. Conveyance charges will also be reimbursed from residence to hospital & back.

**4 Reimbursement of expenses for treatment of Kidney Transplantation etc:
(Scheme was introduced on 10-02-1992)**

KIDNEY TRANSPLANTATION:
(for workers & dependants -
3 years continuous service is
essential)

- a) Reimbursement of expenditure upto Rs.2 lakh **for the treatment taken in govt. hospital /govt. recognised hospital.
- b) Subsistence allowance shall be paid

@ Rs.750-1000/- per month. Conveyance charges will also be reimbursed from residence to hospital & back.

** The Welfare Commissioner of the region has powers to sanction reimbursement upto Rs.30,000/-in each case. And beyond Rs.30,000/ in each case the approval of the office of the DG (LW), New Delhi is required

**5 Financial Assistance for minor diseases like Hernia, Appendectomy, Ulcer, Gynecological diseases and prostrate diseases:
(Scheme was introduced on 13-12-2003)**

Minor Diseases like : a) Reimbursement of expenditure upto
Hernia, appendectomy, Ulcer, Rs.30,000/-for the treatment taken in
Gynecological diseases, Prostrate govt. hospital /govt. recognised hospital.
diseases.
(3 years continuous service)
(Only for Workers)

For availing the benefits of the above schemes, the worker has to take prior permission of /inform the Welfare Commissioner for taking treatment in Govt. Hospital or Govt. recognised Hospitals in the prescribed form through the nearest Medical Officer of LWO dispensary and the claims have to be submitted in the prescribed form.

**6 Financial assistance for purchase of Spectacles:
(Scheme was introduced on 14-09-1984)**

PURCHASE OF SPECTACLES: a) Reimbursement of expenditure upto
(for workers only)- Rs.150/- for purchase of spectacles.
b) Reimbursement of expenditure upto Rs.70/-
for change of lens.

The worker has to procure the spectacle and send the original receipt alongwith the application to the Welfare Commissioner.

**7 Maternity Benefit Scheme for Female Workers:
(Scheme was introduced in 1988)**

MATERNITY BENEFIT: Financial Assistance of Rs.1000/- will be given
(for Female workers only - for the first two deliveries.
6 months continuous service is
essential)

The female worker shall submit the claim of Maternity benefit after delivery alongwith birth certificate in the prescribed format.

**8 Monetary Compensation for Sterilization:
(Scheme was introduced on 29-07-1988)**

MONETARY COMPENSATION FOR STERILISATION Rs.200/- will be paid if the worker or his/her
(for worker & his or her spouse— spouse undergoes Sterilization having two or less
6 months continuous service is living children.
essential)

The worker has to submit the claim in the prescribed format.

9 Reservation of Beds in TB Hospital/ Sanatoria and Domiciliary treatment of TB: (Scheme was introduced on 12-04-1978 & 06-08-1985)

TREATMENT FOR T.B.:
(for workers & dependents -
6 months continuous service is
essential.

a) Free treatment in T.B. Hospital
b) Rs.50/- per month for purchase of medicines
c) Subsistence allowance shall be paid
@ Rs.750-- to workers only

Worker has to avail treatment at the recognised TB Hospitals and submit the claims in the prescribed format. Subsistence allowance will be paid for the period of non payment of wages to the worker.

**10 Providing treatment for mental diseases
(Scheme was introduced on 28-09-1987)**

MENTAL DISEASES
(For workers & dependants)
6 months continuous service
is essential)

a) Monthly expenditure of Rs.180 - Rs.900/- per
patient per month is paid to the mental hospital
b) Subsistence Allowance shall be paid @
Rs.600/- to Rs.750/- per month.

**11 Providing treatment for leprosy for workers.
(Scheme was introduced on 26-08-1986)**

LEPROSY RELIEF
For workers & dependants
6 months continuous service

Subsistence Allowance shall be paid @ Rs.200/-
to Rs. 300/- per month

**12. Scheme for financial assistance to a widow/widower of beedi/cine/ mine
worker as well as to widow/widower worker (mine/beedi/cine) for meeting
the wedding expenses of their daughters.**

- Rs. 5000/- in each occasion for marriage of 1st two daughters.

**13. Scheme for Grant-in-aid to State Govt / ESIC / Beedi Workers Group Housing Co-
op.Society / NGOs / Control of State Govt.. Recognised Hospital /s etc. for providing
medical facilities to Beedi Workers.**

- Upto Rs.2.0 crores or 75% of the actual cost of construction including cost of Medical equipments.
- Rs.4.0 lakh or 75% of the actual cost of Ambulance / Mobile Van whichever is less.
- Rs.10.0-0 lakh per annum or 75% of the actual cost, towards supply of medicines to a 15-bedded hospital maintained by above organisation.
- The said institutions are eligible for grant in aid if they intend to expand the existing infrastructure or to provide both indoor and outdoor medical facilities to the Beedi workers.
- Recurring expenses including payment of salary to the Medical / Para medical / Ministerial staff has to be borne by the respective institution.

**14. Providing financial assistance towards funeral expenses of beedi/cine/ mine
workers.**

- Rs. 1500/- is given in cash as to the family members of the deceased beedi/cine/mine worker to meet the funeral expenses.

15 Grant in aid to mine management for maintenance of standard dispensary services:

Applicability Any Mine management which maintains Standard Dispensary/Hospital .

Benefits: Grant in aid is payable @10 paise per Metric Tonne of Iron Ore/Manganese Ore/Chrome Ore produced and @ 40 paise per metric tonne of Limestone & Dolomite produced or 75% of the expenditure on Medicines and establishments charges, whichever is less.

16. Financial assistance to mine workers involved in serious accident

Applicability Any mine worker who meets with fatal accident or is totally /permanently incapacitated in mine accident.

Benefits A lump sum grant of Rs.10,000/- . An amount of Rs. 1000/- per month for a maximum period of five years. A monthly scholarship of Rs. 250/- to each of the school going child till the age of 21 years or his her marriage whichever is earlier. (The children availing this will not be eligible for scholarship under Financial assistance for Education.)

17. Financial assistance to mine workers for artificial limbs

Applicability Any mine worker

Eligibility Worker who lose their limb while on duty.

Benefits The worker is entitled for supply of artificial limb from any of the recognised /approved centres of Government of India. The total expenditure including the cost of limbs and travelling expenses to the centre is borne by Labour Welfare Organisation.

EDUCATION SCHEME:

FINANCIAL ASSISTANCE FOR EDUCATION

1. Financial Assistance for providing Scholarship to the wards of Beedi Workers.

Under the Education Scheme financial assistance is provided to the school going children of workers studying from Class 1 to professional courses ranging from Rs.250/- to Rs.8000/- per annum.

	<u>BOYS</u>	<u>GIRLS</u>
1. Class 1 to IV	250/-	250/-
2. V to VIII Std.....	500/-	940/-
3. IX Std.....	700/-	1,140/-
4. X.....	1,400/-	1,840/-
5. XI, XII/PUC I & II.....	2,000/-	2,440/-
6. 3yrs diploma/Graduation/PG.....	3,000/-	3,000/-
7. Professional degree.....	8,000/-	8,000/-
BE/MBBS/BSc. (Agri.)		

The worker has to submit the application through the School where the children of the worker is studying in the prescribed form along with seal and signatures of the school, copy of Marks Card with a copy of identity card within the prescribed time limit.

2. Financial assistance for purchase of vehicle for school going children

Applicability Mine management (Lime Stone & Dolomite Mine & Iron/Manganese/Chrome ore mine)

Eligibility Minimum children (studying in school/college or other institutions) to be benefited should not be less than 50 for a normal bus and 30 for mini bus.

Benefits Financial assistance limited to 75% of the actual or Rs.5 lakh for normal bus/3 lakh for a mini bus.

I. HOUSING SCHEME:

Integrated Housing Scheme 2005 for Beedi and Mine workers:

The Scheme will be funded by the Central Government and implemented by the State Government through the District Collector / Deputy Commissioner of the concerned District.

Cost:

Minimum cost of construction would be Rs.45,000/- per tenement (Rs. 40,000/- Central subsidy plus Rs.5,000/- workers contribution). A dwelling unit costing up to Rs.1.00 lakh would be admissible under the scheme.

Mode of Application:

Applications in the prescribed form completed in all respects alongwith the contribution of the workers @ Rs.5,000/- per tenement from the eligible beneficiary shall be deposited with the District Collector / Deputy Commissioner of the concerned district or any authority nominated / appointed by him.

Subsidy:

A uniform Central subsidy of Rs.40,000/- per worker per unit will be granted. The 1st installment of the subsidy of Rs.20,000/- would be released at the time of grant of administrative approval. The 2nd installment of subsidy will be released on the construction reaching the roof level.

Eligibility:

Beedi worker engaged in Beedi industry for not less than 1 year. The monthly income of the family should not exceed Rs.6500/- per month.

The applicant Beedi / Mine worker should not have a House in his/her own name or in the name of his/her spouse or any of the dependents.

The applicant beedi / mine worker or his/her spouse or any of the dependants should not have earlier availed the facility of financial assistance under any housing scheme of the Government.

The house / flat will be completed within a period of 18 months.

All the above conditions of eligibility would be applicable to Iron Ore / Limestone Ore, Dolomite Ore, Chrome / Mica Ore & Manganese Ore Mine workers except in their cases; the family monthly income should not exceed Rs.10,000/-

2. Type I housing scheme for mine workers

Applicability Mine workers employed in the Iron Ore/Manganese ore/Mica/Chrome Ore/Limestone & Dolomite mining industry. The land to be provided by the Mine management at mine site.

Eligibility The life of the Mine should not be less than 15 years. The management must be employing regular mine workers and having residential provision for contract workers more than the houses applied for.

Benefits A subsidy of Rs.40,000/- or 75% of the actual cost whichever is less will be given to the Mine management who will construct the house.

3. Type II housing scheme for mine workers.

Applicability Mine workers employed in the Iron Ore/Manganese Ore/Mica/Chrome Ore /Limestone and Dolomite mining Industry. The land to be provided by the Mine management at the mine site.

Eligibility The life of the mine should not be less than 15 years. The management must be employing regular mine workers and having residential provision for contract workers more than the houses applied for.

Benefits A subsidy of Rs.50,000/- or 75% of actual cost whichever is less is given to the management who will construct the house.

II. Grant-in-aid to registered Co-op. Societies of Beedi Workers with 75 or more members for Construction of Work shed & Godown:

- Minimum area of the work shed and godown should not be less than 750 sq.ft. and 600 sq. ft respectively with a minimum life of 20 years.
- Subsidy of maximum of Rs.1.50 lakh or 75% of actual cost of construction after completion of construction.
- Amount is released after inspection by the officers nominated by Welfare Commissioner.

SOCIAL SECURITY SCHEME:

- Beedi and Cine Workers in the age group of 18-60 years and who are not subscribers of Employees Provident Fund scheme are covered under the Group Insurance Scheme. The benefits under the scheme are as under.

Natural Death	Rs.10,000/-	} Not applicable for Cine Workers
Accidental Death	Rs.25,000/-	
Partial Disability	Rs.12,500/-	
Total Disability	Rs.25,000/-	

WATER SUPPLY SCHEMES FOR MINE WORKERS.

Applicability Mine managements

Eligibility In area of concentration of mine workers houses.

Benefits 75 % of the actual cost of the scheme providing water supply to the mine workers.

GRANT IN AID FOR LIBRARIES FOR MINE WORKERS

Applicability Mine managements

Eligibility Managements should run libraries for the benefit of minimum 100 workers.

Benefits Grant-in-aid of maximum of Rs.5000/- per annum.

RECREATIONAL SCHEMES

1. Supply of tv sets

Applicability Mine and Beedi Workers

Eligibility Mine managements and Beedi Workers Co-operative Societies

Benefits Rs.10,000/- for colour TV set and Rs.4000/- for B&W TV Set.

2. Grant in aid for purchase of dish antenna

Applicability Mine Managements

Eligibility Mine managements who provide housing facilities to their workers and where such houses form a colony of at least 100 houses.

Benefits Payment limited to 50% of the actual cost of the dish antenna including all the accessories or Rs.30,000/- whichever is less.

3. Organising sports/games social & cultural activities

Applicability Mine and Beedi workers

Eligibility a) Each mine management with a group of mines under their control will be eligible for reimbursement of expenditure.

b) Beedi managements or social and cultural organisation of repute.

c) Prior approval of the competent authority is required to be obtained.

Benefits**A For mine managements**

- 1) For purchase of sports gear : 75% of the actual expenditure subject to a limit of Rs.10000/- in a financial year.
- 2) For Sports/Games/Tournaments activity : 75% of the actual expenditure subject to limit of Rs.10000/- in a financial year .
- 3) For social activities : Expenditure limited to Rs.3,500/- or 50% of the actual expenditure, whichever is less
- 4) For cultural activities : Expenditure limited to Rs.3,500/- or 50% of the actual expenditure, whichever is less.

B For Beedi Managements

- 1) 50% of the actual cost of the event subject to a maximum of Rs.2000/- per event.

4. Grant in aid for sports ground

Applicability Mine workers only.

Eligibility The grant-in-aid will be admissible only for provision of Sports Ground where the concentration of workers is not less than 250. Detailed estimate with site plan indicating the place where the sports ground is proposed to be located should be furnished alongwith application.

Benefits Financial assistance will be a grant-in-aid payable subject to a maximum of Rs..3000/- on matching basis.

5. Excursion cum study tour

Applicability Mine Workers

Eligibility

- 1) All permanent and temporary workers.
- 2) His/her name should be in the Forn 'B' register and has put in continuous service of atleast two years.
- 3) He should possess a valid Identity Card on the date of tour.
- 4) The period of tour and total distance to and from should not exceed ten days and 3000 Km respectively.
- 5) The number of workers in one trip should not be less than 10 and not more than 50 in any case.
- 6) To obtain prior approval of Welfare Commissioner before the tour is undertaken.

Benefits Grant-in-Aid payable on matching basis subject to a maximum of Rs.20000/-per tour.

6. Motor vehicle for transportation of mine workers (except mica)

Applicability Mine Workers

Eligibility

- 1) The number of mine workers to e benefited should not be less than 75 in cse of a normal bus and 40 in case of mini bus.
- 2) Assistance will be paid to the mine managements.

Benefits Financial assistance will be as follows:

- 1 Normal bus 75% of the actual cost of Rs.5 lakh whichever is less.
- 2 Mini Bus 75% of the actual cost or Rs.3 lakh- whichever is less.

7. Sight seeing & holiday home facilities for beedi workers:

Applicability Beedi Workers.

Eligibility:

1. Beedi workers with six months of employment are entitled.
2. To and fro 2nd class railway fare, local conveyance and sight seeing @ Rs.3/- per day for 3 days admissible.
3. Reimbursement of expenditure is made after certificate of Caretaker Holiday Home.

8. Grant in aid for setting up of community centres for benefit of beedi workers

- Benefit is available for setting up of Community Centre in beedi Workers Housing Colony having minimum 50 houses.
- The State Government should submit the plan and estimate for construction of Community Hall duly approved by competent authorities.
- the minimum covered area not less than 50 sq. metres with a life of more than 20 years.
- an amount of Rs.1.00 lakh is released on completion of construction after inspection by the Officers of Labour Welfare Organisation.

Manual 4(1)(b)(vi)

STATEMENT OF THE CATEGORIES OF DOCUMENTS THAT ARE HELD BY IT OR UNDER ITS CONTROL.

Documents pertaining to the implementation of the schemes are held by the Labour Welfare Organisation.

Manual 4(1)(b)(vii)

PARTICULARS OF ARRANGEMENT THAT EXISTS FOR CONSULTATION WITH, OR REPRESENTATION BY, THE MEMBERS OF THE PUBLIC IN RELATION TO THE FORMULATION OF TS POLICY OR IMPLEMENTATION THEREOF

The policies are formulated considering the recommendations of the Central Advisory Committees under different funds and the State Advisory Committees recommends the implementation part thereof.

Manual 4(1)(b)(viii)

STATEMENT OF THE BOARDS,COUNCILS,COMMITTEES AND OTHER BODIES CONSISTING OF TWO OR MORE PERSONS CONSISTED AS ITS PART OR FOR THE PURPOSE OF ITS ADVICE, AND AS TO WHETHER MEETINGS OF THOSE BOARDS, COUNCILS, COMMITTEES OR OTHER BODIES ARE OPEN TO PUBLIC, OR THE MINUTES OF SUCH MEETINGS ARE ACESIBLE FOR PUBLIC.

Notifications pertaining to the constitution of State Advisory Committees under different Labour Welfare Funds in Napur Region for the concerning States published in the extra ordinary Gazette of India.

(To be published in the Gazette of India, Part II, Section 3, Sub-Section (ii) of Extraordinary)

Government of India
Ministry of Labour

New Delhi, Dated the 27th January 2004

Notification

S.O. _____ (E). In exercise of the powers conferred by section 5 of the Cine Workers Welfare Fund Act, 1981 (33 of 1981), read with sub-rule (2) of rule 3, sub-rule (1) of rule 4 and rule 16 of the **Cine Workers Welfare Fund Rules, 1984**, the Central Government hereby constitutes an Advisory Committee for the **State of Maharashtra** to advice the Central Government on the matters arising out of the administration of the aforesaid Act, as may be referred to it by the Central Government including matters relating to the application of the Cine Workers Welfare Fund, for a period of three years from the date of publication of this notification in the Official Gazette, namely :-

- | | | | |
|---|---|-------|-------------------------------|
| (1) | Ms. Smita Thackeray,
25, Matoshree, Kalanagar,
Bandra (E),Mumbai-400 051. | | Chairman |
| (2) | Welfare Commissioner,
Government of India,
Nagpur. | | Vice-Chairman
(Ex-officio) |
| Representative of the Central Government appointed under rule 3(2)(iii) | | | |
| (3) | Deputy General Manager,
National Film Development Corporation,
Mumbai. | | Member
(Ex-officio) |

Representatives of State Government appointed under rule 3(2)(iv)

- (4) Labour Commissioner, Member
Government of Maharashtra (Ex-officio)
Commerce Centre, Tardeo,
Mumbai.

Representatives of Producers appointed under rule 3(2)(v)

- (5) Shri Charudatta N. Sarpotdar, Member
Akhil Bharatiya Marathi Chitrapat Mahamandal
Poona Guest House,
Laksmi Road, Pune-411 001.
- (6) Shri Rafique Ahemad Rasik Ansari, Member
New Film Star of Film Industry Association
Attarwala Chawl, Room No.213-B,
Behind Rose Bakery, Mori Road,
Mahim (W), Mumbai-400 016.
- (7) Smt. Ushakiran P. Chavan, Member
All India Film Corporation
Shantideep, Bahar Housing Society,
Opposite Sheelavihar, Vasant Takadi,
Ahemadnagar-414 001.

Representative of Cine Workers appointed under rule 3(2)(vi)

- (8) Shri Madhukar B Patil, Member
Marathi Film Workers Union,
437, A Ward, Shivaji Peth,
Kolhapur.
- (9) Shri Satish B. Bidkar, Member
All India Marathi Film Corporation,
123-D, Datta Maharaj Lane,
Papachi Tikti, Kolhapur.
- (10) Shri Pandit Raj Joshi, Member
The Film Writers Association,
Satyam, 7-A/380, New DN. Nagar,
Andheri (W), Mumbai-400 053.

Secretary appointed under rule 3(2)(b)

- (11) Welfare Administrator, Secretary
Labour Welfare Organisation,
Nagpur.

2. The headquarters of the said Advisory Committee shall be at Mumbai.

[No.U.19012/3/2002-W.II(C)]

(Manohar Lal)
Director General (Labour Welfare) /
Joint Secretary to the Government of India

To

The Manager,
Government of India Press
Mayapuri
New Delhi.

(To be published in Part II, Section 3, Sub-section (ii) of the Gazette of India, Extraordinary)

Government of India
Ministry of Labour

New Delhi, the 26th April, 2006

Notification

S.O. 612 (E). In exercise of the powers conferred by section 6 of the Limestone and Dolomite Mines Labour Welfare Fund Act, 1972 (62 of 1972), read with sub-rule (2) of rule 3, of the Limestone and Dolomite Mines Labour Welfare Fund Rules, 1973, and in supersession of the notification of the Government of India in the Ministry of Labour, number S.O. 1499, dated the 15th June, 1989, except as respects things done or omitted to be done before such super session, the Central Government hereby constitutes the **Advisory Committee for Limestone and Dolomite Mines Labour Welfare Fund for the State of Maharashtra** and appoints the following persons as members of the said Committee for a period of three years from the date of publication of this notification in the Official Gazette, namely :-

(1) Minister for Labour, Chairman
Government of Maharashtra,
Mumbai.

Welfare Commissioner appointed under rule 3(2)(a)(ii)

(2) Welfare Commissioner, Vice-Chairman
Government of India, (ex-officio)
Nagpur.

Representative of the Central Government appointed under rule 3(2)(a)(iii)

(3) Regional Labour Commissioner, Member
(Central) (ex-officio)

Mumbai.

Member of Legislative Assembly appointed under rule 3(2)(a)(iv)

(4) Shri Ramesh Bang, Member
Member of Legislative Assembly
At and Post-Hingana,
District-Nagpur-440 002.

Representatives of Employers' appointed under rule 3(2)(a)(v)

(5) Shri S.S. Sharma, Member
Executive President (Coordination),
ManikgarhCement, Gadchandur,
Taluk-Korpana, District-Chandrapur.

(6) Shri C. Udaybhaskar Nair, Member
Chairman,
Nairsons Group of Companies,

166, Syria Bhavan, Ram Nagar,
Nagpur-440 033.

Representative of Employees' appointed under rule 3(2)(a)(vi)

(7) Shri R.M. Nirmal, Member
Chandrapur District Cement Workers Union,
E/5, E.F. Colony, Manikgarh Cement,
Gadchandur, Talum-Korpana,
Dist-Chandrapur.

(8) Shri Tulsiram Ramchandra Shinde, Member
Old Subhedar Layout Extension,
Nagpur.

Women representative appointed under rule 3(2)(a)(vii)

(9) Smt. Roopa Shekhar Rai Member
"Nanhka", 10, East High Court Road,
Ramdaspath,
Nagpur-440 010.

Secretary appointed under rule 3(2)(b)

(10) Welfare Administrator, Secretary
Labour Welfare Organisation,
Nagpur.

2. The headquarters of the said Advisory Committee shall be at Nagpur.

3. The tenure of the members (other than ex-officio members) shall be for a period of three years.

[No.U.19012/01/92-W.II(C)]

(Manohar Lal)
Director General (Labour Welfare) /
Joint Secretary to the Government of India

To
The Manager,
Government of India Press
Mayapuri, New Delhi.

(To be published in Part II, Section 3, Sub-section (ii) of the Gazette of India, Extraordinary)

Government of India
Ministry of Labour and Employment

New Delhi, Dated the 10th April, 2006

Notification

S.O. 522 (E). - In exercise of the powers conferred by section 5 of the Iron Ore Mines, Manganese Ore Mines and Chrome Ore Mines Labour Welfare Fund Act, 1976 (61 of 1976) read with sub-rule (2) of rule 3, sub-rule (1)(a) and (20 of rule 4 and rule 16 of the Iron Ore Mines, Manganese Ore Mines and Chrome Ore Mines Labour Welfare Fund Rules, 1978, the Central Government hereby constitutes an Advisory Committee and appoints the following persons to the said Committee for the **State of Goa** to advise the Central Government on the matters arising out of the administration of the aforesaid Act, including matters relating to the application of the **Iron Ore Mines, Manganese Ore Mines and Chrome Ore Mines Labour Welfare Fund**, for a period of three years from the date of publication of this notification in the Official Gazette, namely :-

1. Minister for Labour,
Government of Goa,
Secretariat, Porovorim-Goa. Chairman
2. Welfare Commissioner,
Government of India,
Nagpur. Vice-Chairman
(*ex-officio*)
3. Regional Labour Commissioner,
(Central)
Mumbai Member
(*ex-officio*)
Central Government Representative
4. Director,
Mines Safety,
Directorate of Mines Safety,
Goa Region, Margao, Goa. Member
(*ex-officio*)
Central Government Representative
5. Shri Aleixo Sequeira,
M.L.A (Loutolim),
Near Raicho Ambo,
Raia Salcete, Goa. Member of the
Legislative Assembly

Representatives of Employers'

6. Shri Shivanand Salgaonkar,
M/s V.M. Salgaonkar and Bros.,
Vasco-da-Gama, Goa.

7. Shri Vijay Ghougule,
M/s. Chowgule and Company Ltd.,
Chougule House,
Mormugao, Goa.

8. Shri Shrinivas Dempo,
M/s. Dempo Group of Companies,
Campal, Panaji, Goa.

Representatives of Employees'

9. Shri Christopher Fonseca,
Secretary, (AITUC)
Goa Mining Labour Welfare Union,
Velho's Building, 2nd Floor,
Panaji, Goa.

10. Shri P. Gaonkar (B.M.S.)
General Secretary,
Gomantak Mazdoor Sangh,
Kamakshi Krupa, Khadpabandh,
Ponda, Goa.

11. Dr. (Mrs.) Luiza Pereira,
Secretary, (CITU)
All Goa General Employee's Union,
Post Box No.90,
Vasco-da-Gama, Goa.

12. Assistant Welfare Commissioner, Secretary
Labour Welfare Organisation,
Goa.

2. The headquarters of the said Advisory Committee shall be at Panaji.

[No.U.19012/7/2005-W.II(C)]

(Manohar Lal)
Director General (Labour Welfare) /
Joint Secretary to the Government of India

To
The Manager,
Government of India Press
Mayapuri
New Delhi.

**Manual 4(1)(b)(ix) & (x) DIRECTORY OF OFFICERS AND EMPLOYEES &
MONTHLY RENUMERATION**

SL. NO.	NAME	DESIGNATION	MONTHLY GROSS REMUNERATION
1	T.K.RAO	W.C.	35760
2	H.J.PARMAR	DY. W.C.	31767
3	R.K.SHARMA	A.A.O.	23321
4	T.K.SINGH	W.A.	17273
5	P.M.KUTTY	A.W.A.	14129
6	S.S.KAMBLE	A.W.A.	13408
6A	S.P. DESHPANDE	A.W.A.	11169
7	S.J.GARG	STENO-II	17309
8	P.M.BAURASI	STENO-III	13732
9	SHRI C.D.NAVELKAR	H.C.A.	13587
10	F.R.SONI	H.C.A.	12918
11	D.N.KORI	U.D.C.	10689
12	N.M.KHAPEKAR	U.D.C.	12004
13	P.H.PUNWATKAR	U.D.C.	11572
14	U.J.WASNIK	U.D.C.	11572
15	G.S.MISHRA	U.D.C.	9603
16	R.M.DHARMIK	U.D.C.	9048
17	SMT. K.DEVIDAS	L.D.C.	10644
18	M.L.NIMJE	L.D.C.	7778
19	S.P.WANJARI	L.D.C.	8533
20	G.N.KAKDE	L.D.C.	8733
21	C.S.GUPTA	L.D.C.	9531
22	R.G.BOBADDE	L.D.C.	7168
23	M.S.WAGHADE	L.D.C.	8168
24	D.S.PATLE	L.D.C.	8955
25	SHRI A.K.SASHIDHARAN	L.D.C.	7100
26	C.R.DANGE	DRIVER-I	10746
27	A.D.LANJEWAR	DRIVER-II	10166
28	G.V.DABHOLKAR	DRIVER	12206
29	G.G.MATE	DAFTARY	8315
30	R.G.CHOUDHARY	PEON	5953
31	S.N.HEDAU	PEON	6936
32	G.B.TASKAR	PEON	6359
33	SHRI H.K.JAMBHULKAR	PEON	8272
34	V.R.MALJI	PEON	8810

35	U.M. LOHI	CHOWKIDAR	8224
36	DEEPAK BHAGAT	CHOWKIDAR	6619
37	S.D.DANDGE	SWEEPER	6933
38	N.K.DEVARAJAN	ASSTT. ENGG.	19313
39	L.N.S. KUNKOLIENKAR	ASSTT. LIBRARAN	12508
40	C.C.GAWAS	PEON-CUM-WATCHMAN	8810
41	DR. S.P.MULCHANDANI	CHIEF MEDICAL OFFICER	43878
42	DR. R.S.TAHILIANI	CHIEF MEDICAL OFFICER	40987
43	DR.(MRS) A.S.PHADKE	CHIEF MEDICAL OFFICER	44119
44	DR. A.G.JOSHI	CHIEF MEDICAL OFFICER	41734
45	DR. N.U.TABHANE	CHIEF MEDICAL OFFICER	40712
46	DR. S.K.JAIN	CHIEF MEDICAL OFFICER	40211
47	DR. (MRS) R.A.JAWALEKAR	CONTRACT MEDICAL OFFICERS	6000
48	DR. A.D.MALEWAR	CONTRACT MEDICAL OFFICERS	15000
49	DR.V.K.AKUDE	CONTRACT MEDICAL OFFICERS	15000
50	DR. G.R.LOHIYA	CONTRACT MEDICAL OFFICERS	15000
51	DR. V.B.HASE	CONTRACT MEDICAL OFFICERS	15000
52	DR. A.M.MOWADKAR	CONTRACT MEDICAL OFFICERS	15000
53	DR.P.S.GIRIPUNJE	CONTRACT MEDICAL OFFICERS	15000
54	DR. G.G.ZAREKAR	CONTRACT MEDICAL OFFICERS	15000
55	SMT. S.A.PATIL	CONTRACT MEDICAL OFFICERS	15000
56	DR. D.B.BHOJWANI	VAIDYA	32495
57	DR. S.G.KAPSE	VAIDYA	27414
58	SHRI S.R.GHORMARE	VAIDYA	17059
59	SHRI R.D.CHAMALWAR	UP-VAIDYA	8085
60	SMT. M.J.DANDE	UP-VAIDYA	8102
61	SMT. T.K.NAGDEOTE	STAFF NURSE	19229
62	SMT. R.S. GHAWADE	STAFF NURSE	17603
63	SMT. I.R. WAGHAMARE	STAFF NURSE	18949
64	SMT. S.M.MIRASHE	STAFF NURSE	17386
65	SMT. S.D.KADAM	STAFF NURSE	18511

66	SMT. M.R.KALBANDE	STAFF NURSE	18656
67	SMT. P.B.BANGRE	STAFF NURSE	18157
68	SMT. K.R.DONGRE	STAFF NURSE	17101
69	SMT. N.A. DABHADE	STAFF NURSE	17386
70	SMT. T.R.BODELE	STAFF NURSE	17101
71	SMT. U.R.KAMBLE	STAFF NURSE	17386
72	SMT. S.P.SAKHARE	STAFF NURSE	16900
73	SMT. J.A.HASE	STAFF NURSE	16670
74	SMT. M.ORIEL	STAFF NURSE	16398
75	SMT. S.S.NARVEKAR	A.N.M	13360
76	SHRI N.K.GANJIWALE	PHARMACIST	16326
77	SHRI P.P.DEO	PHARMACIST	14987
78	SHRI R.R.WAGHAMARE	PHARMACIST	15957
79	SHRI V.G.BAKSHE	PHARMACIST	16192
80	SMT. M.B.WASNIK	PHARMACIST	14859
81	SHRI S.M.DESHMUKH	PHARMACIST	14995
82	SHRI P.E.DUBE	PHARMACIST	14884
83	SHRI D.G.DHULE	PHARMACIST	14995
84	SHRI R.M.NANDURKAR	PHARMACIST	14884
85	SHRI R.J.MAKODE	PHARMACIST	14381
86	SHRI A.R.GADE	PHARMACIST	14433
87	SHRI C.S. MOWADE	PHARMACIST	15076
88	SMT. K.S.BORSE	PHARMACIST	12322
89	SHRI G.M.SELUKAR	PHARMACIST	11771
90	SHRI M.K.NATHANI	PHARMACIST	11771
91	SHRI P.P.LAWATE	PHARMACIST	13910
92	SHRI Y.B.LAKKEWAR	DRIVER	11599
93	SHRI G.P.WADHAI	DRIVER	11448
94	SHRI V.K.KORE	DRIVER	12182
95	SHRI B.N.MARAPE	DRIVER	12605
96	SHRI B.S.ZANZAL	DRIVER	11313
97	SHRI SHEIKH ILIYAS	DRIVER	11313
98	SHRI CHACKO VERGHESE	DRIVER	10155
99	SHRI M.P.DOLAS	DRIVER	10009
100	SHRI W.N.KAROKAR	DRIVER	9916
101	SHRI G.N.SHINDE	DRIVER	11545
102	SHRI V.D.OVHAL	DRIVER	7164
103	SHRI B.M.SONAWANE	DRIVER	7580
104	SHRI S.V.VEDE	DRIVER	9547
105	SHRI U.K.NIKOSE	DCA	8324
106	SHRI D.M.DESHMUKH	DCA	8046
107	SHRI C.G.NAGARDHANE	DCA	8789
108	SHRI V.S.KALSHETTY	DCA	8442

109	SHRI R.S.BAGDE	DCA	8839
110	SHRI A.G.BHALADHARE	DCA	7982
111	SHRI B.H.WAGHMARE	DCA	8047
112	SHRI N.R.PASIKANTI	DCA	7898
113	SHRI P.V.GIRIPUNJE	DCA	7893
114	SHRI S.S.PARMAR	DCA	7982
115	SHRI M.B.KHONDEKAR	DCA	6941
116	SHRI P.A.JANGILWAR	DCA	6745
117	SHRI V.V.JAMBHULKAR	DCA	6745
118	SHRI P.R.SINGH	DCA	7235
119	SHRI B.G.LANJEWAR	DCA	10501
120	SHRI P.L.YADAV	CHOWKIDAR	8734
121	SHRI M.B.JADHAV	CHOWKIDAR	8272
122	SHRI V.V.DARBHE	CHOWKIDAR	8990
123	SHRI T.S.RAMTEKE	CHOWKIDAR	8125
124	SHRI M.C.KAWALE	CHOWKIDAR	8290
125	SHRI D.V.ROKDE	CHOWKIDAR	8327
126	SHRI B.W.MESHRAM	CHOWKIDAR	8400
127	SHRI S.S.PICHAKE	CHOWKIDAR	7838
128	SHRI V.S.SAKHARE	CHOWKIDAR	7107
129	SHRI N.G.CHAKOLE	CHOWKIDAR	6745
130	SHRI P.D.KHOBRADE	CHOWKIDAR	6610
131	SHRI D.S.WAKODIKAR	CHOWKIDAR	8056
132	SHRI S.D.BHINGARDIVE	SWEEPER	7982
133	SMT. V.H.WANKHEDE	SWEEPER	8260
134	SMT. G.R.MESHRAM	SWEEPER	7649
135	SMT. S.R.GOJRE	SWEEPER	7649
136	SMT. S.B.DOMKAWALE	SWEEPER	7777
137	SMT. S.R.KARANDE	SWEEPER	7649
138	SMT. S.A.MASKE	SWEEPER	8335
139	SMT. S.S.WAHANE	SWEEPER	7893
140	SMT. R.S.RANVIR	SWEEPER	7107
141	SMT. MAYA AMNE	SWEEPER	7125
142	SHRI S.S.PEDNEKAR	SWEEPER-CUM CHOWKIDAR	8005

MANUAL 4(1)(b)(xi) BUDGET ALLOCATION B.E. 2006-07

(Rs.in '000)

UNIT OF APPROPRIATION	BWWF	IOMCMLWF	LSDMMLWF	CWWF
ADMINISTRATION	4508	2224	307	40
HEALTH	21052	10638	1935	1610
EDUCATION	43025	5441	755	1250
RECREATION	25	180	60	0
HOUSING	19500	0	0	0

BWWF	-	Beedi Workers Welfare Fund
IOMCMLWF-		Iron Ore, Manganese Ore & Chrome Ore Mines Labour Welfare Fund
LSDMMLWF	-	Limestone & Dolomite Mines Labour Welfare Fund
CWWF	-	Cine Workers Welfare Fund

Manual 4(1)(b)(xii) **SUBSIDY PROGRAMME**

Manual 4(1)(b)(xiii) **PARTICULARS OF RECEIPIENTS OF CONCESSIONS, PERMITS OR AUTHORISATIONS GRANTED BY IT**

Not applicable to Labour Welfare Organisation

Manual 4(1)(b)(xiv) **DETAILS IN RESPECT OF THE INFORMATION AVAILABLE TO OR HELD BY THE ORGANISATION REDUCED IN AN ELECTRONIC FORM**

- i) Details of organisation, its field units, function and duties
- ii) The powers and duties of officers and employees
- iii) Channel of supervision
- iv) Details of Schemes
- v) Details of State Advisory Committees
- vi) Directory of officers and employees alongwith remuneration
- vii) Budget allocation for the year 2005-2006
- viii) Details of subsidy granted under Integrated Housing Scheme
- ix) Names, designation and other particulars of the Central Public Information Officer/Assistant Central Public Information Officer of the Organisation.

Manual 4(1)(b)(xvi) PUBLIC INFORMATION OFFICERS

SNO.	PUBLIC INFORMATION OFFICER	TELEPHONE/FAX NO.
1.	Shri H.J. Parmar Deputy Welfare Commissioner (C) Labour Welfare Organization CGO Complex, Block 'C' (2 nd Floor) Seminary Hills NAGPUR – 440 006 (MS)	Phone (0712) 2510200 Fax (0712) 2510474
2.	ASSISTANT PUBLIC INFORMATION OFFICERS	
a.	Assistant Welfare Commissioner Labour Welfare Organization Rua St. Tome, Saldanha Building PANAJI - GOA	Phone (0832) 2225853(O) Fax (0832) 2224904
b.	Dr.(Mrs.) A.S.Phadke Chief Medical Officer I/c. BWWF Dispensary C/o. Sonawane Maternity Home Near Sonmarg Talkies Bhawanipeth PUNE 411 042	Phone(020) 25441833 (R)
c.	Dr. S.P.Mulchandani Chief Officer I/c. BWWF Dispensary House No. R/145, Gujri Chowk KAMPTEE – 441 002 (Distt. Nagpur)	Phone(0712) 2646296 (R)